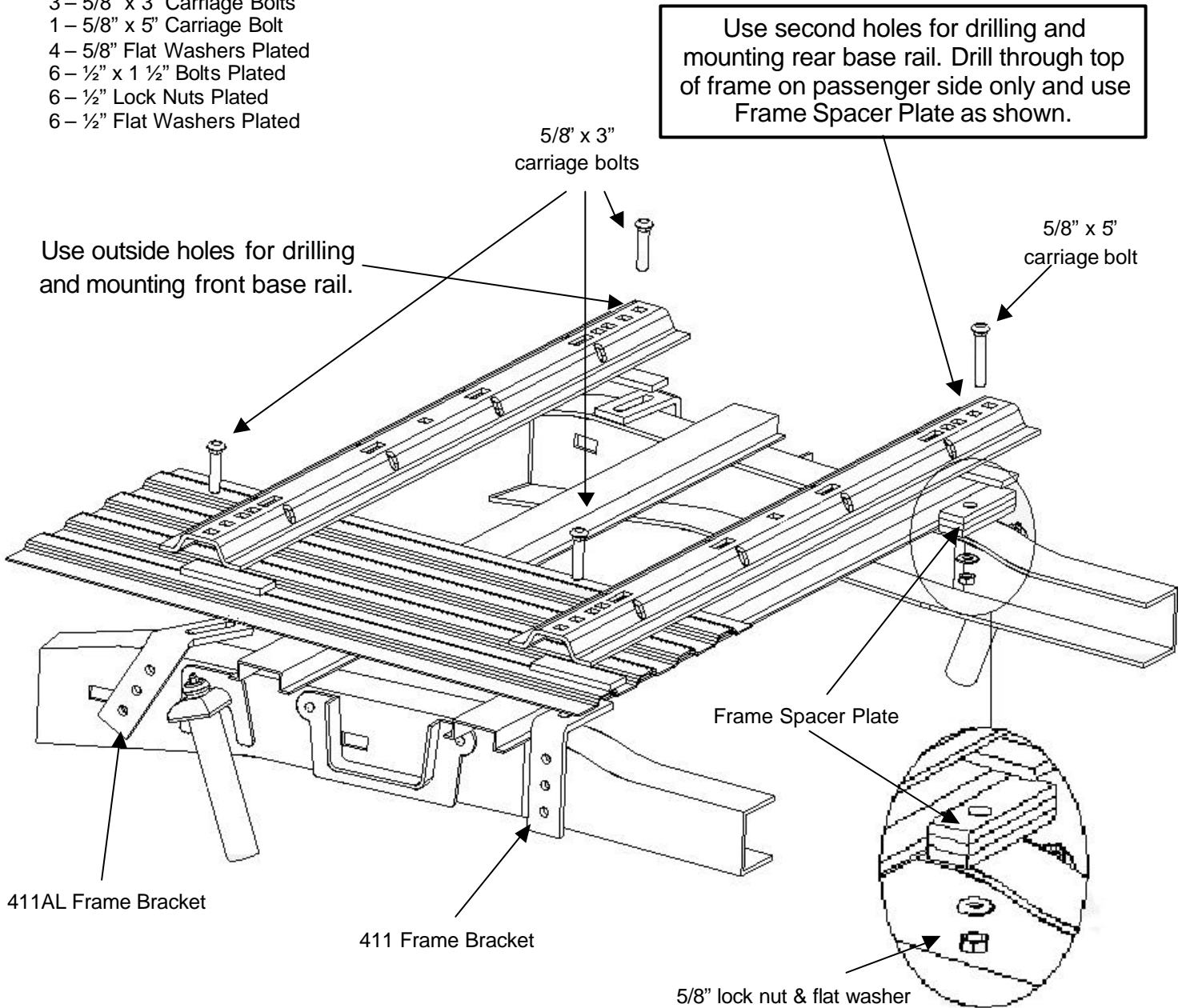


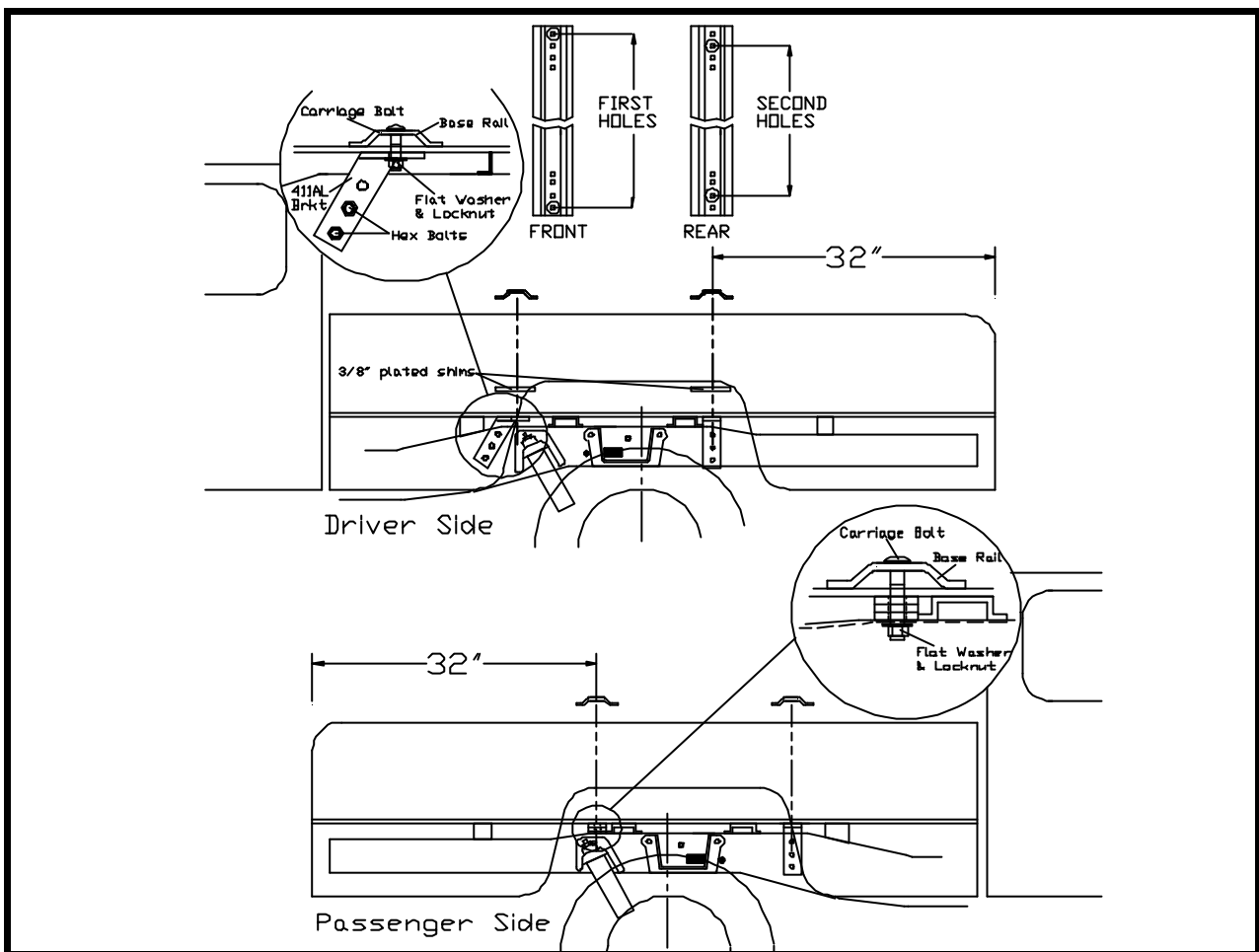
T07ULBK Installation

This is a frame specific installation instruction for the UL model hitches in 2007 Toyota Tundra 6 ½ foot and 8 foot box pickup trucks. This installation requires drilling of the frame for frame brackets. Below is a view of the parts and how they are installed. Between this diagram and the instructions (5.21), the installation should be fairly straightforward.

T07ULBK Contents:

- 2 – 411 Frame Brackets
- 1 – 411AL Frame Bracket
- 1 – Frame Spacer Plate
- 4 – 5/8" Locknuts NC Plated
- 3 – 5/8" x 3" Carriage Bolts
- 1 – 5/8" x 5" Carriage Bolt
- 4 – 5/8" Flat Washers Plated
- 6 – ½" x 1 ½" Bolts Plated
- 6 – ½" Lock Nuts Plated
- 6 – ½" Flat Washers Plated





INSTALLATION

April 11, 2007

1. a. Completely assemble hitch. See GENERAL INSTRUCTIONS and SAFETY, p. 1.10.
b. Set hitch into back of truck, center it side to side.
c. Measure 32" from back edge of truck box to square hole centers in rear bedrail.
2. Check underneath box at bolt hole locations for any obstruction (frame members, etc.).
3. a. Drill two dia. 5/8" holes thru FRONT BEDRAIL, OUTSIDE POSITION, as shown. Use OUTSIDE hole locations, front and rear. Drop in two 5/8" x 3" carriage bolts.
b. Drill two holes in REAR BEDRAIL, 2nd HOLE POSITION. Drop in 5/8" x 3" carriage bolt on driver side and save 5/8" x 5" carriage bolt for passenger side. **NOTE:** On passenger side rear hole, drill down through top of frame as well.
4. a. Under box, loosely install frame brackets, SAE flat washers and lock nuts onto carriage bolts on both driver side and front passenger side brackets (3 places).
b. On rear passenger side place spacer block between top of frame and under side of box.
c. Press each bracket tight against frame member; tighten nuts snug against box.
5. a. Pilot drill* and drill dia. 1/2" holes into truck frame, at two places thru holes each frame bracket -- BE CAREFUL OF ELEC. OR FLUID LINES behind frame members.
b. Fasten brackets with 1/2" x 1 1/2" long hex bolts, washers, nuts.
c. TIGHTEN ALL BOLTS to 90 FT.LBS.